

ViceBreaker[®] H1

Owner's Guide

Remote Controlled Electronic Collar by



CONGRATULATIONS!

Congratulations on the purchase of your ViceBreaker® H1. This remote controlled electronic collar is designed especially for horse use. The ViceBreaker® H1 is successfully used by horsemen worldwide to safely and humanely eliminate unwanted and dangerous horse behaviors. This product is Veterinarian and Trainer Tested and Approved.

Tri-Tronics takes great pride in the design, manufacture, service and safety of all our products. Any time you have a question, need customer support or have a problem don't hesitate to contact us. Customer Service for your ViceBreaker® H1 can be reached at **support@tthorse.com** or **1-800-808-8423 (VICE)**. Visit us online at **tthorse.com**.

Thank you for choosing the ViceBreaker® H1. We are committed to helping you, our valued customer, eliminate dangerous or nuisance behaviors in your horses. Your complete satisfaction is our goal!

Product Specifications

Product specifications may change without notice or obligation since Tri-Tronics is committed to a policy of continuous improvement.

Certain Tri-Tronics products are covered by one or more of these U.S. patent numbers: 4794402, 4802482, 5054428, 5099797, 5193484, 5471954, D298872, 4947795, 4202293, 4335682, D410206, 6178439B1, D445706S, D446144S, 6549133, D445707S, 6750758, and patents pending.

Owner's Registration Reply Card

Please take a moment to complete and return the Owner's Registration Reply Card. When you do, your purchase of your ViceBreaker® H1 will be "on file" at Tri-Tronics. This will help ensure timely warranty work should you need it. You can also register your product online at **tthorse.com**.

Third Edition, May, 2005
Published by Tri-Tronics, Inc., Tucson, Arizona
Copyright © 2005 Tri-Tronics, Inc.
All rights reserved. Printed in the USA.

TABLE OF CONTENTS

Warnings	1
Components	2
Feature Guide	4
Attaching the Receiver to Your Collar	5
Installing the Transmitter Antenna	6
Charging the Receiver	6
Turning the Receiver On and Off	8
Fitting the Collar on Your Horse	9
Multi-Horse Models	9
Setting the Stimulation Level	10
The No-stimulation Tone	11
Common Questions and Answers	
About Electronic Collar Corrections	12
Training Suggestions	13
Correcting Behavior Problems	14
Cribbing, Windsucking	14
Wood Chewing	15
Aggression Towards People, Kicking, Striking and Attacking	16
Aggression Toward Other Horses or Animals	17
Stopping the Hot Walker	17
Stall or Confinement Vices	17
Other Vices	19
Care and Cleaning	20
Battery Replacement	20
Range	21
Radio Signal Issues	21
FCC Compliance	22
Product Safety	22
Service and Warranty	23
Troubleshooting Guide	24

Naturally you're anxious to get started working on your horse's bad habits, but please take a few minutes to read this entire guide. It will familiarize you with the components, use and care of your ViceBreaker® H1 so that your training will proceed as successfully and quickly as possible.

WARNINGS

Because of the variation in individual horse's reactions, we advise the following:

- ALWAYS USE THE LOWEST STIMULATION LEVEL THAT IS EFFECTIVE WITH YOUR HORSE.
- ALWAYS CHECK THE INTENSITY DIAL ON YOUR TRANSMITTER PRIOR TO STIMULATING HORSE TO MAKE SURE IT HAS NOT ACCIDENTALLY BEEN CHANGED.
- DO NOT USE IN AREAS WITH LOW CEILINGS.
- DO NOT USE WHILE RIDING.
- DO NOT USE WHILE HORSE IS TIED OR CROSS-TIED.
- DO NOT ALLOW CHILDREN TO OPERATE.
- BEWARE OF STRIKING, KICKING, REARING OR HEAD THROWING.
- ALWAYS PLACE THE RECEIVER ON THE SIDE OF THE NECK THAT YOU WILL BE ON, IF YOU WILL BE ANYWHERE NEAR THE HORSE WHEN CORRECTING IT. Anticipate that the horse may suddenly move away from the receiver contact points when it feels the stimulation.
- DO NOT STAND IN FRONT OF THE HORSE AS IT MAY STRIKE OUT.
- DO NOT OVERUSE.

And lastly...

- ALWAYS USE WITH CAUTION AND COMMON SENSE.

COMPONENTS

The Transmitter is a hand-held device with which you signal the receiver. When you press the red transmitter button, the horse will feel an electrical stimulation coming from the receiver. For two horse units: the red and blue buttons will produce an electrical stimulation from the receiver on the horse wearing the corresponding matching colored collar sleeves. For three horse units: the third horse will feel stimulation when the yellow button is pressed. When you press the green transmitter button, the horse will hear an audible signal tone coming from the receiver (ViceBreaker® H1 only). Both the tone and the stimulation will continue until you release the transmitter button, up to the automatic “time-out,” which occurs at three seconds. This is a safety feature.

The intensity of the stimulation is set by the numbered transmitter dial. *See page 10 for how to find the right intensity for your horse.* The loop at the bottom of the transmitter allows you to attach the included lanyard. The transmitter contains a 9-volt battery that should be replaced if the red light blinks rapidly when you press a transmitter button. The transmitter is waterproof.

The Antenna is necessary for the transmitter to operate properly. A 3.8 inch antenna comes standard with every ViceBreaker® H1.

The Receiver produces stimulation when you press the red transmitter button, (red and blue on ViceBreaker® H1-2; red, blue and yellow on ViceBreaker® H1-3) and a non-stimulation tone (ViceBreaker® H1 only) when you press the green transmitter button. The receiver produces your choice of six different levels of stimulation, which are selected with the transmitter dial. Stimulation is delivered to the horse via the insulated contact points on the receiver. The receiver is impact resistant and completely waterproof. The light on the receiver flashes when the receiver is turned on, when a signal is received, and when batteries are low. The receiver contains a rechargeable Nickel Metal Hydride (NiMH) battery.

An optional dummy collar that consists of the leather collar with elastic insert and a dummy receiver attached is available for times that the active receiver is being recharged or for the rare horse that associates the correction with the collar (less than 1%).

The Collar is handmade with a high quality leather. The collar also has an elastic insert to ensure proper fit, contact and comfort.

The Battery Charger can be plugged into any normal home or barn wall socket. (120VAC, 60Hz, 9W). A 14-hour charge fully recharges the receiver. The receiver can be used after less than 14 hours of charging but will need to be recharged sooner.

The Lanyard clips onto the loop of the transmitter to enable you to conveniently carry the transmitter around your neck.

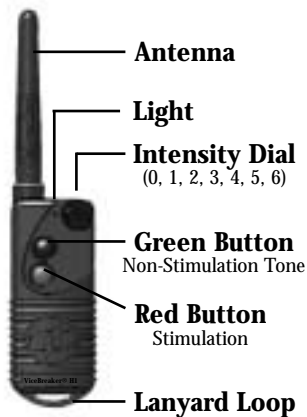
The Transmitter Holster is equipped with a convenient belt/pocket clip to allow hands-free transport of the transmitter. The transmitter may be operated when clipped to your belt but its range will be significantly reduced. For best range, hold the transmitter away from your body.

Collar Sleeves are included with the ViceBreaker® H1-2 (blue and red) and the ViceBreaker® H1-3 (blue, red and yellow). They are used to identify which horse will receive stimulation when that coordinating colored button on the transmitter is pressed.

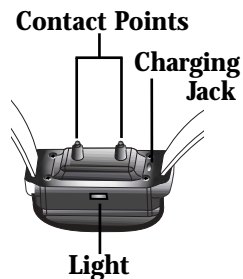
A Carrying Case is included with your ViceBreaker® H1, ViceBreaker® H1-2, ViceBreaker® H1-3. The case will protect your unit during travel and storage.



ViceBreaker® H1 Transmitter

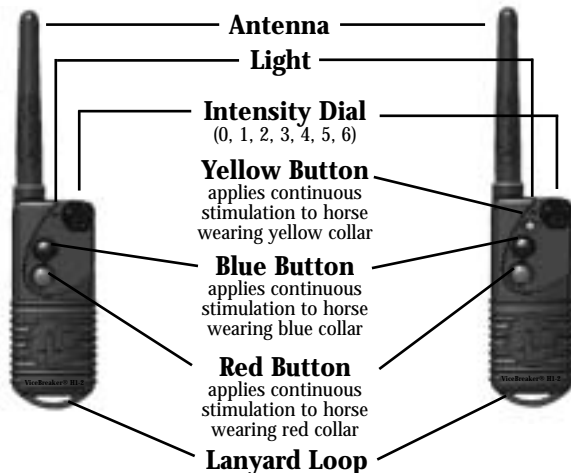


ViceBreaker® H1 Receiver, ViceBreaker® H1-2 Receiver, ViceBreaker® H1-3 Receiver



ViceBreaker® H1-2

ViceBreaker® H1-3



Receiver Light

Action	Receiver Function
Double flash	Receiver is turned on
Glows steadily *	Receiver is receiving signal from transmitter
Single long flash (3.5 seconds)	Receiver has just been turned off
Rapid flash **	Low batteries. Recharge the receiver soon
Glows steadily while on charger	Receiver is charging

* It will take 20 seconds after turn-on before the light will glow steadily or before the receiver will stimulate.

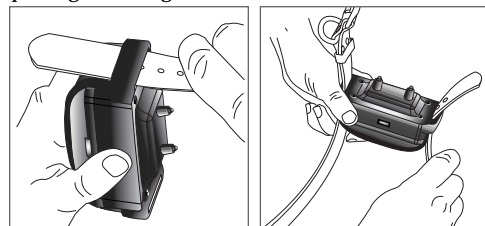
** If the batteries are low at the time the receiver is turned on, the low battery signal can be delayed by up to 20 seconds. Also note that in cold weather the low battery light may come on prematurely.

Transmitter Light

Action	Transmitter Function
Illuminates when a button is pressed	Transmitting
Flashes rapidly when a button is pressed <small>Page 1</small>	Low battery. Unit will not operate. Replace the 9-volt battery.

ATTACHING THE RECEIVER TO YOUR COLLAR

Your ViceBreaker® H1 is shipped with the receiver separate from the collar. Install the collar on the receiver as shown in the diagram by sliding the leather collar through the slot on one side of the receiver, passing it around the bottom of the receiver, then pulling it through the slot on the other side. Snug the collar firmly



against the surface of the receiver. Position the buckle where it is convenient.



INSTALLING THE TRANSMITTER ANTENNA

Screw the transmitter antenna into the top of the transmitter. Hold the antenna near the base and tighten firmly by hand. Check the antenna regularly for tightness.

CHARGING THE RECEIVER

Charge the receiver for about 14 hours before using the unit. (The transmitter comes with a 9-volt battery installed and does not need to be charged.)

When to Recharge

When the light on the receiver blinks rapidly, you need to

recharge the receiver soon. The amount of time that receiver batteries have left after the low battery indicator comes on depends on what level of stimulation you use and how frequently you apply it, the temperature (less time remains during cold weather), and other factors. By using the remote turn on/off feature to turn the receiver off when you will not be observing your horse, you can enhance the length of time between charges.

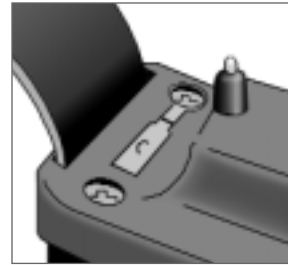
How to Charge

Make sure there is no moisture in the receiver charging jack prior to attaching the charger because moisture can interfere with proper charging. Charge batteries at room temperature for 14 hours. Do not charge at temperatures below freezing. Remember that it takes several hours for cold batteries to come up to room temperature.

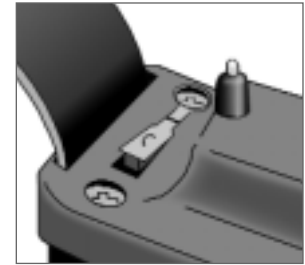
Lift the rubber protection flap from the receiver charging jack. Plug the charger into the wall outlet, then insert the charging plug into the receiver jack. The receiver light will glow red to indicate that current is flowing. (If the receiver batteries are very low it may take a few minutes for the light to glow.) When you are finished charging, unplug the lead from the receiver before disconnecting the charger from the wall.

Reinstall the rubber protection cap correctly to keep dirt, debris and water out of the charging jack. Seat the flap down firmly so that it is level with the surface of the receiver as shown in the next illustration below. Keeping the charging

jack clean ensures your charger makes good contact. If the receiver charging jack becomes dirty, clean it as described in the section, "Care and Cleaning," (page 20).



Protection cap fitted properly



Protection cap not fitted properly. Moisture and debris can enter charging jack.

Use only the correct Tri-Tronics charger to charge your receiver. Using the wrong type of charger may damage batteries or the receiver itself. Do not charge batteries that are not inside the receiver.

Charging Time

Charge your receiver for at least 14 hours. The receiver will function normally with less than 14 hours of charge but 14 hours ensures full battery capacity. To get maximum battery life, do not charge for more than 20 hours at a time. Occasionally exceeding the 20-hour limit will not harm the functioning of your batteries. However, this product is not designed to be left on a charger indefinitely.

Storing Instructions

Before storing your ViceBreaker® H1 for an extended period, charge the collar for 14 hours. Thereafter, charge every two months while the unit is in storage, and charge for 14 hours immediately before first use. If the storage time will exceed six months, remove the 9-volt battery from the transmitter.

It's always best to store a ViceBreaker® H1 at room temperature.

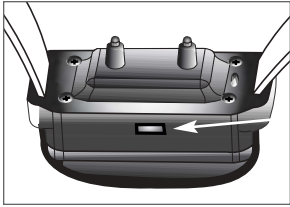
TURNING THE RECEIVER ON AND OFF

The receiver must be turned ON before it can receive signals from the transmitter. To turn the receiver ON, set the transmitter intensity dial to the number 0 (zero). Hold down any transmitter button as you watch the light on the front of the receiver. When the light begins blinking red, the receiver is turned ON and is capable of receiving signals from the transmitter. This process takes about 5-10 seconds.

Note that it takes about 20 seconds after turn-on before the receiver can apply stimulation.



When the intensity dial is on zero, pressing either transmitter button turns the receiver on or off. Move the dial to a number other than zero for training.



When the collar light blinks red, the receiver is turned on.

To turn the receiver OFF, repeat the turn-on process. The receiver light will make one long red flash and then go out to indicate that the receiver is now turned OFF. To save battery life between sessions, you should turn the receiver OFF when you will not be observing the horse. You can also turn the receiver OFF by placing it on its charger. This feature allows you to turn a receiver OFF if you cannot find its transmitter or the transmitter batteries have run down.

After turning the receiver ON, it is a good idea to move the intensity dial to whatever level of stimulation you will be using to correct your horse so you don't accidentally turn the receiver OFF the first time you correct him.

Note: If you are performing any activities that could cause your transmitter buttons to be accidentally bumped or pressed, you can leave the intensity dial turned to 0 (zero) to prevent any possibility of an unwanted stimulation.

FITTING THE COLLAR ON YOUR HORSE

Place the collar on the smallest part of your horse's neck (the throatlatch area). If one contact point sits in the jugular groove, it may not make good contact and the horse will not feel any stimulation. Fit the collar as tightly as possible without being too restrictive. Once you have the collar adjusted to the correct length, you may cut off the excess, leaving approximately six inches (enough to slip through the keepers).

Note: Due to normal differences in horse conformation, some horses will have a deep jugular groove. If one contact point sits in the jugular groove, it will not make good contact and the horse will not feel any stimulation. Place the receiver either above or below the jugular groove.

Horses tend to move away from the stimulation, sometimes suddenly, when they feel it. Therefore always place the receiver on the same side of the neck that you will be on, if you will be standing anywhere near the horse when correcting it.

It is important to check your horse daily for possible skin irritation. If your horse develops any signs of irritation, move the receiver to a different area on the horse's neck. Be sure to continue to check the tightness of the collar as the leather becomes more supple.

Both contact points must press firmly against the horse's neck. Avoid placing the receiver against the jugular groove, because contact will be inconsistent.



CORRECT



INCORRECT

MULTI-HORSE MODELS

When installing the colored sleeves on multi-horse models (red and blue on a two-horse, and red, blue, and yellow on a three-horse) be sure to use the sleeve that matches the colored dot on the receiver. Run each end of the collar strap through sleeves of the same color. That way you will be able to see what color sleeve the horse is wearing, regardless of his direction, and know which button on the transmitter will apply stimulation to that horse. Before you place the collars on the horses press each stimulation button and watch the collar light to be sure the correct collar is receiving the signal.

SETTING THE STIMULATION LEVEL

The ViceBreaker® H1 can give corrections at different intensity levels, so you can match the level of correction to both the vice being corrected and your horse's temperament. You must choose which level is most appropriate for your needs and set the transmitter accordingly. We recommend always starting at the lowest level.

The transmitter intensity dial gives you a choice of six intensities, in addition to the 0 (zero) setting for turning the collar ON and OFF. To change the level of stimulation intensity, simply turn the intensity dial on the transmitter to the number that corresponds to the desired level of stimulation.

Intensity Dial Levels

Level 0:	<i>Transmitter is off – no stimulation. Pressing a button turns the receiver ON and OFF</i>
Level 1:	<i>Especially low intensity for extremely sensitive horses</i>
Level 2:	<i>Low intensity</i>
Level 3:	<i>Medium intensity</i>
Level 4:	<i>High intensity</i>
Level 5:	<i>Enhanced high intensity (Reserve High)</i>
Level 6:	<i>Extra high enhanced intensity (Ultra High)</i>

Always start at the lowest stimulation level and work your way up until you get the desired response from your horse. Please note that the very lowest level is designed for ultra sensitive horses and is so slight that many horses may not react at all. The two highest levels, 5 and 6, are approximately equivalent to an electric fence.

The first four levels are for normal vicebreaking situations. Levels 5 and 6 are for unusual situations where a significantly stronger stimulation is needed. You may see a much stronger reaction from your horse when these levels are applied. They are intended for special problem cases. See the section, "Training Suggestions," on page 13.

When you increase or decrease the stimulation level using the intensity dial, be sure you have released the transmitter buttons prior to changing the dial or your new intensity selection will not take effect. Also note that turning the intensity dial while

stimulation is occurring will stop the stimulation. This is a safety feature.

Please note that neither the tone (ViceBreaker® H1) nor the stimulation will operate when the intensity dial of your transmitter is set to 0 (zero). You must select a number other than 0 (zero) to operate your unit.

THE NO-STIMULATION TONE (ViceBreaker® H1 only)

Your receiver produces an electronic tone when you press the green button on your transmitter. This tone can be used instead of stimulation in cases where you want to cue your horse without stimulating him. The tone cannot be used during stimulation, however. We recommend that you do not use any pre-stimulation warning tone when you begin training your horse to stop a particular habit. You do not want to warn the horse prior to stimulating him initially. If he were to hear the tone and stop the vice and then be stimulated, he may not associate the stimulation with the vice.

Note: No-stimulation tone not available in multi-horse units.



COMMON QUESTIONS AND ANSWERS ABOUT ELECTRONIC COLLAR CORRECTIONS

1. Will the ViceBreaker® H1 injure my horse?

Studies have proven that electrical stimulation is a safe, humane and effective way to communicate with many animals.

ViceBreaker® H1 products have adjustable intensity levels to accommodate the most sensitive temperaments.

2. How does remote controlled electronic training work?

Remote training is based on proven theories on conditioning.

These theories establish that timing is of utmost importance.

The ViceBreaker® H1 is an extremely effective way of communicating with your horse at the instant you need to, even if he is a 1/2 mile away.

3. Can the receiver shock my horse by itself?

The ViceBreaker® H1 uses modern microprocessing technology and built-in safety circuits to virtually eliminate outside interference. They also have an extra built-in safety feature, which automatically turns stimulation off after three seconds of continuous use. See the section, "Product Safety," on page 22.

4. How soon can I expect to see an improvement in my horse's behavior?



Most problems can be substantially resolved with one to two applications. A longer program may be needed depending on the problem to be corrected and the horse's personality and temperament. In our testing we have also found that some horses may need a reminder a few months later. Owning a ViceBreaker® H1 can act as a permanent insurance policy against behavior problems developing throughout your horse's life.

TRAINING SUGGESTIONS

–Veterinarian and Trainer Tested and Approved

In making your behavior corrections, please keep in mind the differences in personality and temperament of each horse. Each horse responds differently, and therefore these training suggestions are only guidelines. Start your training at low stimulation level settings and increase those levels as needed to get the desired response from your individual animal. The higher settings will not harm your horse, so if you are not getting the desired results don't hesitate to raise the stimulation level.

The first few times you stimulate your horse on level 1, it may frighten or startle him. It does not hurt. Once your horse gets accustomed to the sensation and is no longer frightened or startled he will soon realize that it didn't hurt and you may have to turn the level up. The lower stimulation levels are very low and may only be effective for very sensitive animals or vices that are not strongly ingrained. Levels 5 and 6 are for vices that require a significantly stronger stimulation. You may see a much stronger reaction from your horse when these levels are applied. They are intended for special problem cases, such as aggression towards people, or cribbing.

Important –We recommend placing the collar on the horse and allowing him to become accustomed to it before stimulating him. This prevents the horse from associating the collar with the correction. If he is allowed to become comfortable with the collar, then to him it is just another piece of tack, and the stimulation is associated with the particular bad habit and not the collar. We recommend leaving the collar on all the time (other than during recharging) until the bad habit is corrected. If you are constantly putting the collar on and stimulating the horse, then taking it off, he may learn to relate the correction to wearing the collar and not to his vice. The remote turn ON/OFF feature allows you to turn the receiver OFF or ON from a distance without the horse being aware of the change.

This enables you to turn the receiver off when you will not be able to observe the horse and turn it back on when you return. This feature will greatly increase the length of time between charges.

YOU SHOULD CORRECT YOUR HORSE ONLY WHEN YOU "CATCH HIM IN THE ACT."

Be sure to be consistent and persistent. Horses learn by experiencing consistent responses to their actions. Most vices will be corrected with just one or two stimulations.

Some ingrained habits, however, will take more persistence. For these habits especially, your close observation and consistent stimulations every time the horse performs the vice is important. For example if a horse cribs on his feeder and is corrected for it, he may then try to crib on the fence or the waterer. If he is not corrected at these places as well, he will probably learn that it's bad to crib on the feeder but the other places are OK. On the other hand, if he is consistently corrected every time he tries to crib no matter where it is, he will learn that it is the act of cribbing that is causing his discomfort.

Consistent correction is the key!

If working on more than one bad habit with an individual horse, only correct one vice at a time to avoid confusing the horse. Allow at least 2-3 weeks between working on each different vice.

CORRECTING BEHAVIOR PROBLEMS

Please read the section, "WARNINGS," on *page 1*.

Abnormal horse behavior can have a variety of causes. Some actions may indicate illness or injury. Begin by ruling out any health problems that may cause your horse to behave in a certain way. **ONLY your veterinarian can rule out possible health-related causes.**

Other bad habits can be caused by boredom. It is important that once a bad habit is corrected, care be taken to make sure the horse receives enough exercise and mental stimulation.

Cribbing, Windsucking

Cribbing is a vice in which the horse sets its upper incisor teeth against an object, arches its neck, pulls backward and sucks in air. This can lead to digestive problems. During this process, endorphins are released into the horse's system, giving them a "high." Most cribbers are hard to "keep" because of the digestive problems and the fact that they would rather crib than eat. An additional problem is the excessive wear on the front edges of the upper incisor teeth. Cribbers will have a very strong drive to crib, thus making it one of the more difficult vices to control.

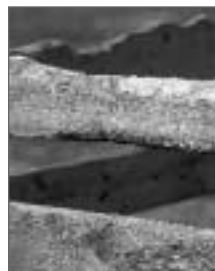
Place the collar around the horse's neck and leave it on him. Take it off only for charging.

Press the button on the transmitter just as the horse is about to set his teeth on the object. Be sure to stay out of the horse's sight. The most important thing is to be both consistent and persistent.

Due to the "high" the horse receives, you will most likely need to work up to the higher levels before he is convinced to "kick the habit." Some very addicted cribbers may become restless and frustrated upon initially giving up the habit similar to a person who has quit smoking. This will pass, so be persistent. Leave the collar on for at least three weeks after you have seen the horse crib for the last time. It is important to check your horse daily for possible skin irritation. If your horse develops any signs of irritation, move the receiver to a different area on the horse's neck.

If you need an active receiver on your horse at all times, an extra receiver is an option. This option enables you to charge one receiver while the other is on the horse. If you are interested in this option, please call our Customer Service Department for more information and pricing.

Very rarely (less than 1% of the time) an older chronic cribber may associate the stimulation with wearing the receiver. We attribute this to the number and variety of cribbing collars these horses have worn in their lifetimes. These few horses will stop cribbing when the collar is on, but may resume when it is removed. These horses need to wear a dummy collar. The dummy collar can be worn loosely, like a breeding collar, but is still effective.



Wood Chewing

Wood chewing is one of the most common vices. It is very difficult and expensive to design horse buildings, paddocks and fences so that horses cannot chew them. It takes only a few hours for a horse to completely chew through a 2" x 12" board. Some horses chew wood every chance they get due to boredom, while others chew wood only when the weather changes, especially in wet conditions. This vice can be dangerous to the horse because it can swallow, or be punctured by splinters of wood. This habit is very expensive to the stable, ranch or farm owner because of the need to continually replace badly chewed boards.

Place the collar around the horse's neck and leave it on. Take it off only for recharging. Press the button on the transmitter as soon as the horse's teeth are on the wood. If possible, remain out of the horse's sight. Of the wood-chewing horses we have tested, most were corrected after one or two stimulations. From that point on, those horses did not have to wear the collar for periods of up to one year or more. Some horses needed a reminder several months later.

Aggression Towards People, Kicking, Striking and Attacking

Kicking - The horse that habitually kicks at other horses or people is dangerous to own or handle. Handle such horses cautiously, so that you are never where the horse can kick you.

Striking - Striking with the forefeet is a dangerous vice, because the handler is always vulnerable to injury. While handling these horses, always remain alert and be sure to stay at the horse's side, not in front of it.



Attacking/Charging

This is one of the most dangerous problems that the ViceBreaker® H1 can help you with. Fortunately, deliberate attacks on people are not as common as the other vices. Not many horses are actually vicious, but

any aggressive horse must be controlled. The ViceBreaker® H1 is very effective in these cases in that it teaches the horse to respect the handler without fear. The handler never personally inflicts pain on the horse, so he is able to gain the horse's confidence while still teaching it to obey.

As soon as the horse makes any attempt to kick, strike, or attack, he must be corrected immediately!

For a very aggressive horse, we recommend, for your safety, that you set the transmitter at a higher level. Leave the collar on the horse at all times. As soon as the horse's ears go back and he comes at you, command him with a sharp "No" and simultaneously press the button. In this case hold the button down until you are sure the horse has ceased his attack on you. (If you hold the button down for longer than three seconds, the stimulation will "time out." To start another correction, just press the button again.)

Aggression Toward Other Horses or Animals

Fighting is aggressive behavior by dominant individuals. Once dominance is established, usually the fighting is rare.



In some situations, two dominant horses will fight often, because one is constantly challenging the other. In other cases, a dominant animal is overly aggressive towards one or more individuals and is relentless in its attacks on these animals. This behavior is usually worse at feeding times. This is a very serious problem with horses that are kept together. Serious injuries often occur and the victims of these attacks are often thin due to lack of feed.

As with aggression toward people, try to correct your horse as soon as the aggressiveness is on his mind. In these cases you do not have to give any commands. It is actually better if you are not seen or heard, so the horse does not associate the correction with you. Horses can be very smart. You don't want them to learn not to do something only when you're present.

Stopping the Hot Walker

This bad habit may seem like more of a nuisance to horse owners but it can lead to serious health problems. Fortunately it is very easily corrected. Be careful not to use the collar if the hot walker is at a lower height. As soon as the horse stops the walker, correct him. The key is to be out of sight. Many horses will not stop a walker if you are close enough to physically correct them. When you use the ViceBreaker® H1, the horse associates the discomfort with stopping, rather than with you. Typically you will only need the lower intensity levels to cure this problem.

Stall or Confinement Vices

Stall vices may cause injury to the horse, may cause poor performance, or may waste energy. They are often an expression of boredom. These include weaving, stall kicking, stall walking, pawing, self-mutilation, and eating bedding or dirt. Stall vices can be contagious when the horses mimic each other.

Weaving - Weaving is a rhythmical shifting of the weight of the forehand from one forefoot to the other. This is a nervous habit that takes a tremendous amount of energy.

It results from too much high energy food and/or insufficient exercise. This vice is rapidly learned by horses that see it being performed.

Stall kicking - Stall kicking can cause serious injury to the hind legs and hocks. Some horses kick the walls of their stable for no reason other than just to kick. Other horses kick the walls of their stable at feeding time to display their impatience. Some horses only kick at night.

Stall or confinement vices and other vices on the list below are not addressed individually. Follow the general procedures in the examples above, and keep in mind the important key training ideas stressed in this Guide.

1. Timing - Catch your horse in the act.

2. Consistent corrections - Correct your horse every time he performs a vice, not just some of the time.

3. Stay out of sight as much as possible.

4. Start with a low stimulation level, and work your way up as necessary.

5. Correct one vice at a time - If working on more than one bad habit with an individual horse, only correct one vice at a time to avoid confusing the horse. Allow 2-3 weeks between working on each vice.

6. Persistence pays!

By following these key guidelines you should be able to correct these vices and many more.

Other Vices

Here is a list of additional vices that can be corrected with your ViceBreaker® H1. Use the above training suggestions as a guide for these problems, or any other problems you may think of.

Please be sure to read the Warnings section again on page 1. When used properly, this device is a wonderful aid for trainers and owners.

- Chewing leg wraps or bandages
- Tongue flapping or hanging
- Chewing fly masks
- Teeth grinding
- Blanket chewing
- Chewing wounds (not for medical reasons)
- Eating dirt or bedding
- Excessive licking or chewing objects
- Noise making
- Walking in place
- Fence walking or pacing
- Stall walking
- Stall digging
- Pawing (not for medical reasons)
- Door banging
- Foot stomping (not for medical reasons)
- Head bobbing, shaking or throwing
- Rubbing blankets on fences
- Excessive grooming
- Tail or mane eating
- Unruliness in a breeding stallion
- Leaning over or running through fences
- Excessive dominance of pasture mates
- Jumping out of pastures
- Charging the fence or stall
- Banging the feeder
- Self-mutilation

CARE AND CLEANING

A little care can extend the life of your ViceBreaker® H1 and reduce service costs.

Charging Jack

Keep the protection flap secured over the battery charging jack. If the charging jack becomes dirty, flush thoroughly with clean tap water. If debris still remains, you can use the point of a toothpick to loosen remaining debris: be careful not to bend the contacts inside the jack. *Important: Be sure to allow the charging jack to dry thoroughly after washing it before you connect a charger, or proper charging may not occur.*

Cleaning

Wash the receiver with clean drinking water. Use a small brush to remove any foreign materials around the screws and contact points.

Extending Battery Life

Caring for your batteries will prolong their useful life significantly. Don't store your ViceBreaker® H1 in extreme heat or cold. Storing any type of battery in a high or low temperature will shorten battery life. Follow the battery charging instructions on *page 8*. By turning the receiver off when you will not be observing your horse, you can enhance the length of time between charges.

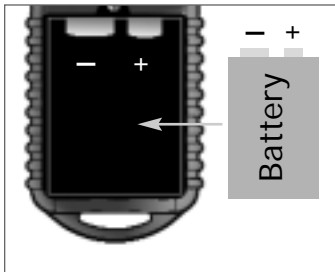
Antenna

Regularly check for tightness. If it becomes loose, hold it at the base and tighten firmly by hand.

BATTERY REPLACEMENT

Replacing the Transmitter Battery

Your ViceBreaker® H1 is shipped with one 9-volt battery installed. This battery will last for many months in normal usage. If you see the transmitter light flash rapidly when a button is pressed, it is time to replace the transmitter battery.



The larger battery terminal should touch the larger transmitter contact.

To change the battery, unscrew the small Phillips head screw on the back of the transmitter, and lift the battery cover off. Remove the old battery and install the new battery in the

correct direction. Use a Duracell or Eveready 9-volt alkaline battery. Note that some other brands will be too long and will not fit correctly. Never force a battery into this compartment.

Replace the battery cover, tighten the Phillips head screw (do not over-tighten), and check for transmitter function by pressing a button while you watch the transmitter light.

If the light does not illuminate, you may have installed the battery backwards. If so, take it out and turn it around.

Replacing the Receiver Batteries

Proper battery care will help ensure maximum life from your rechargeable receiver batteries. When your receiver batteries do need to be replaced, you can replace them yourself with parts obtained from Tri-Tronics. Follow the instructions that come with the replacement battery pack. Contact your local officials to find out whether any special disposal requirements applying to used NiMH batteries are in effect where you live.

While receiver batteries are user-replaceable, it is important that you open the receiver away from any dust and dirt to avoid contamination. Open a receiver only for the purpose of replacing batteries.

RANGE

Your ViceBreaker® H1 has a range of one-half mile. Terrain, weather, vegetation, transmission from other radio devices in the area, and other factors affect the range. For the very best range, hold the transmitter away from your body, and even above your head.

RADIO SIGNAL ISSUES

Modern microprocessor technology virtually eliminates the possibility that your collar could be unintentionally activated. Please contact our Customer Service Department at **support@tthorse.com** or **1-800-808-8423 (VICE)** with any questions.

FCC COMPLIANCE

Tri-Tronics products are manufactured to operate within Federal Communication Commission (FCC) specifications. It is a violation of FCC rules to modify your equipment.

Tri-Tronics certifies its products to operate under Part 95 of FCC regulations. Unauthorized modifications to your equipment could result in its not meeting specifications and thus violating FCC regulations. Only technically qualified personnel authorized by Tri-Tronics should perform adjustments. Any replacement of circuit components including antennas must meet Tri-Tronics manufacture specifications. The transmitter should only be operated with the Tri-Tronics antenna installed.

This device complies with Part 15 of the FCC rules. Operation is subject to the following two conditions: (1) This device may not cause harmful interference, and (2) this device must accept any interference received, including interference that may cause undesired operation.

PRODUCT SAFETY

The ViceBreaker® H1 by Tri-Tronics has two independent circuits that are designed to prevent excessive electrical stimulation. One is located in the transmitter, the other is in the receiver. Like all other parts of our products, these safety circuits receive special attention in Tri-Tronics environmental, reliability and quality analysis.

The ViceBreaker® H1 has the added safety feature of Level 0 (zero) on the transmitter. At times when your transmitter might be accidentally bumped against objects during use, you can leave the intensity dial turned to 0 (zero) to prevent the possibility of an unwanted stimulation.

Please Note: Your ViceBreaker® H1 receiver and transmitter are linked to each other and assigned a unique frequency code while being made at the Tri-Tronics factory. This ensures that only your transmitter will ever be able to activate your receiver. There are thousands of frequency codes and if you lose a receiver or transmitter, the remaining component must be shipped back to the Tri-Tronics factory to be reprogrammed and linked to your new component. Please call or e-mail Customer Service with any questions.

SERVICE AND WARRANTY

Customer Service

We hope that this guide has been helpful. If you have any questions, or you suspect your ViceBreaker® H1 is malfunctioning, please contact our Customer Service Department at **support@tthorse.com** or **1-800-808-8423 (VICE)**. Before you call, please read the "Troubleshooting Guide" on *page 24*.

Factory Warranty

The ViceBreaker® H1 is covered by a two-year warranty on parts and labor. The warranty is transferable to a new owner, but does not cover physical damage or abuse. The warranty is also void if the ViceBreaker® H1 has been altered or unauthorized service work has been attempted.

Repair Procedure

Always call our Customer Service Department before sending your ViceBreaker® H1 in for repairs.

If you send your ViceBreaker® H1 in for repair, either while under warranty or out of warranty, we may replace it with a reconditioned unit.



TROUBLESHOOTING GUIDE

Your ViceBreaker® H1 is likely to function trouble-free for years. If you do experience difficulties, please consult this troubleshooting guide.

PROBLEM #1: No stimulation – the receiver light won't illuminate when a transmitter button is pressed.

The receiver has not been activated. The receiver must be turned on or it won't work at all. *Page 8.*

The transmitter intensity dial is set on zero. Select a position other than 0 (zero) *Page 10.*

An antenna is not installed in the transmitter, or is broken or loose. The antenna must be inserted in the transmitter for proper radio communication between it and the receiver. *Page 6.* Check the antenna for physical damage and replace if needed.

The batteries in either the receiver or the transmitter are dead. Recharge or replace, as needed. *Pages 6, 20 & 21 .*

The receiver batteries are not taking a charge. Either you need new batteries (*page 21*) or the battery charger is not working. See whether the receiver light is glowing red while connected to the charger. The power may not be working. Try another wall outlet. If you are using a power strip, make sure it is switched on and working.

PROBLEM #2: No stimulation – the receiver light illuminates but the horse does not seem to feel it at all.

The receiver is not in good contact with the horse's skin.

The collar may be too loose, or thick winter hair may be interfering with the contact. If your horse consistently puts his head down to preform a vice and the collar is becoming loose simply tighten the collar.

Due to individual horse conformation, some horses will have a very deep jugular groove in their neck. This is especially common with Thoroughbreds. With these horses, one contact point will sit in the groove and not make contact, while the other contact point above or below it is making excellent contact.

The horse will NOT feel any stimulation unless both contact points are making good contact with the skin. Try to position the receiver above or below the groove. One might try wetting the horse's neck or using a water base gel such as KY jelly where the contact points rest to improve the contact.

The stimulation level is not correct. The ideal intensity level depends on the situation to be corrected and the individual horse. Try a different level. Also note that in very cold weather, you may need to use a slightly higher setting to achieve the same level of intensity. Remember that the stimulation button must be released prior to changing the intensity level for the new setting to take effect. *Page 10.*

The batteries in either the receiver or the transmitter are dead. Recharge or replace as needed. *Pages 6, 20 & 21.*

Debris or contaminants are interfering with electrical stimulation. Clean the receiver and contact point area.

PROBLEM #3: The ViceBreaker® H1 doesn't have range, or the range has been significantly reduced.

The battery in the transmitter may be low and need to be replaced. Replace the transmitter battery as described on *Page 20.*

An antenna is not installed in the transmitter or is broken or loose. The antenna must be installed in the transmitter for proper radio communication between the transmitter and the receiver. *Page 6.* Check the antenna for physical damage and replace if needed.

Either you or the horse is shielded by a metal structure. Metal fences, chain link fence, screen doors, buildings, and other metal structures can affect the radio signal.

For the very best range, hold the transmitter away from your body, and even above your head.

PROBLEM #4: The receiver is difficult to turn on or turn off.

Begin the turn-on or turn-off cycle again. Occasionally you will need two tries to turn the receiver ON or OFF. For best results when turning the receiver OFF, watch the receiver light and begin pressing the transmitter button when the receiver light is not flashing.

The intensity dial is not set on 0 (zero). Select the 0 (zero) position for activating and deactivating the receiver. *Page 8.*

The transmitter is too close to the receiver. Hold it farther away, up to 10 feet. *Page 8.*

An antenna is not installed in the transmitter, or is broken or loose. The antenna must be inserted in the transmitter for proper radio communication between it and the receiver. *Page 6.* Check the antenna for physical damage and replace if needed.

The batteries in either the receiver or the transmitter are dead. Replace the transmitter battery and/or replace or recharge the receiver battery. *Pages 6, 20 & 21.*

PROBLEM #5: The receiver light indicates low charge very quickly.

The receiver has been left on. Make sure the receiver is turned off after use. *Page 8.*

You are using your ViceBreaker® H1 in very cold weather.

The low battery indicator comes on prematurely in very cold weather. *Page 5.*

Make sure the batteries are well charged. *Page 6.*

PROBLEM #6: The receiver deactivates itself while in use.

The intensity dial is set on 0 (zero). Select a position other than zero.

The batteries have run down. The receiver light may require 20 seconds to register "low batteries" after you turn the unit on. Check the receiver after 20 seconds to see if the low battery indicator is on.

Make sure the batteries are well charged. *Page 6.*

PROBLEM #7: The receiver light glows steadily even though the receiver is not stimulating.

You're experiencing temporary radio interference. The light may illuminate when it receives any radio signal. This does not mean that stimulation is occurring.

PROBLEM #8: The receiver light does not come on when the charger is plugged in.

The receiver batteries are very low. The receiver light will take a while to light during the charging cycle whenever the batteries are very low. This is normal and does not indicate a malfunction.

Debris in receiver charging jack. Carefully clean the charging jack as described on *page 20.*

Faulty charger. Contact us at support@tthorse.com or **1-800-808-8423 (VICE)** to order a replacement.

No AC current. Make sure the outlet you are using is operating.

Notes:



Notes:

